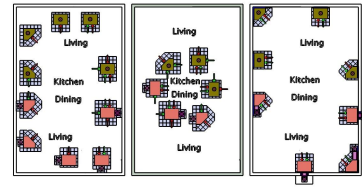


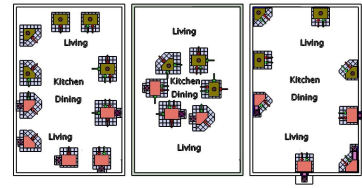
Masonry Heater Design House
Booth X105
www.mhdhWisconsin.com



These drawings show a base vented masonry heater in a timber frame setting. Dimensions and many project specific details have been left out on purpose. Please consult with masonry heater and building professionals before beginning construction. **The highest bidder for the silent auction will get a set of plans made specifically for the type of masonry heater they are purchasing. The drawings will include dimensions for support structure, hearth, masonry heater and flue system. Specific details unique to the type of masonry heater you choose will also be detailed.**

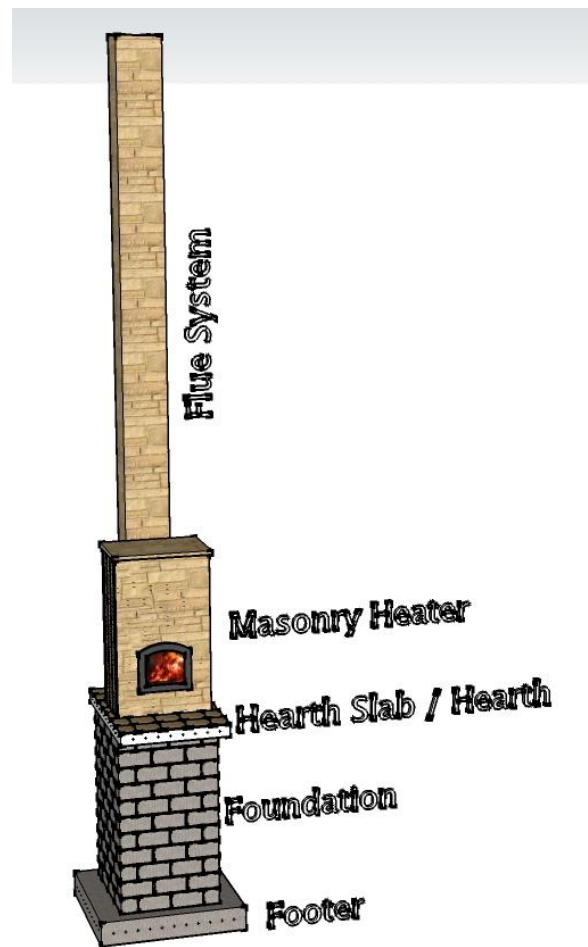
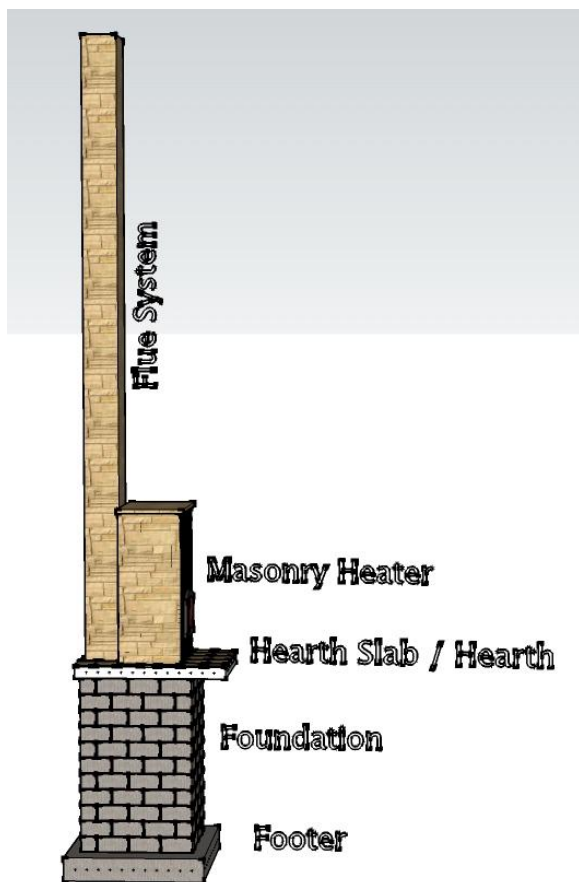
Masonry Heater Design House
Hickory Corners MI
269-598-5831
mhdh@tds.net

Masonry Heater Design House
Booth X105
www.mhdhWisconsin.com

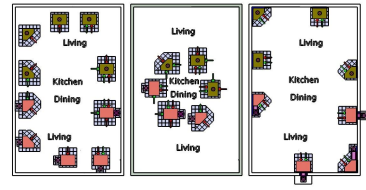


The four main components of a project are:

- Masonry Heater**
- Support Structure (footer, foundation, hearth slab)**
- Flue System**
- Installation**



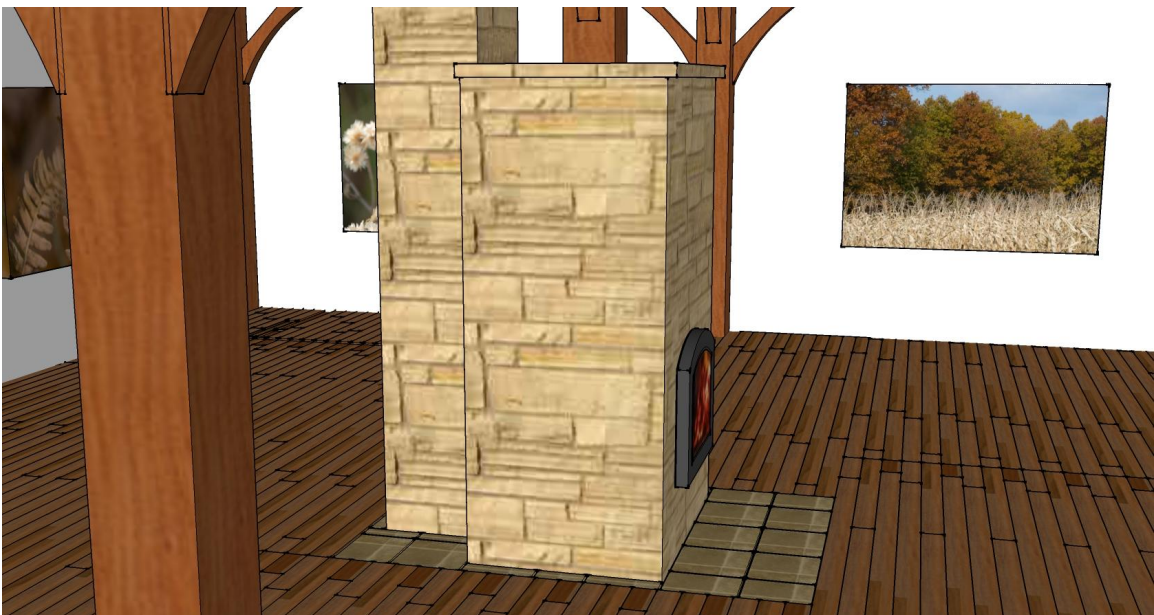
Masonry Heater Design House
Booth X105
www.mhdhWisconsin.com



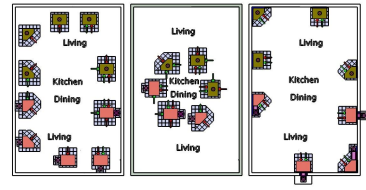
Front



Side



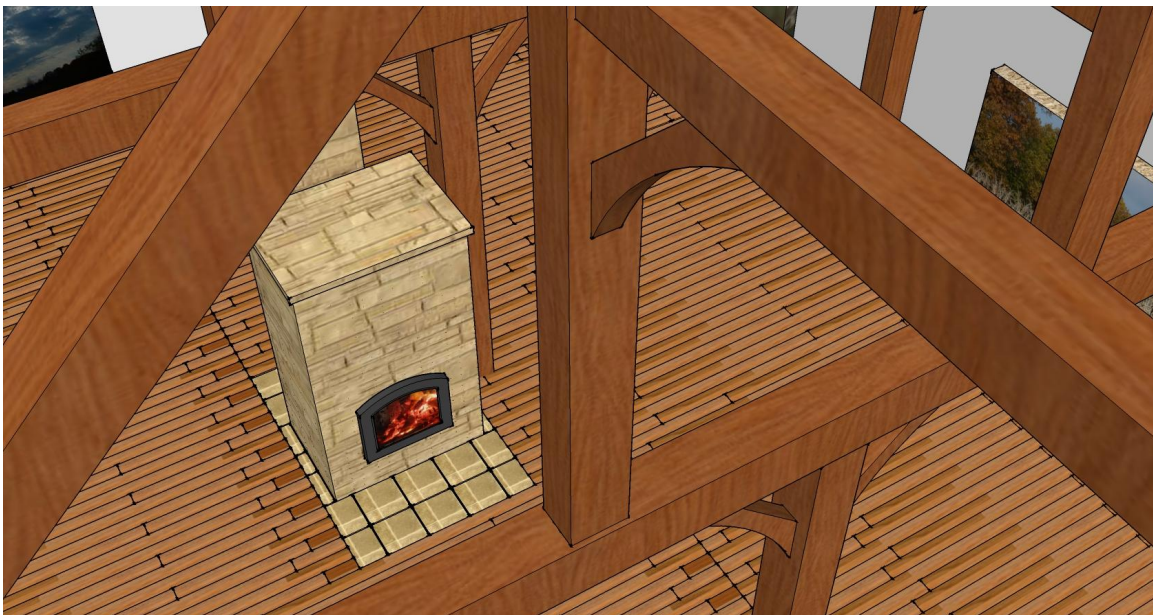
Masonry Heater Design House
Booth X105
www.mhdhWisconsin.com



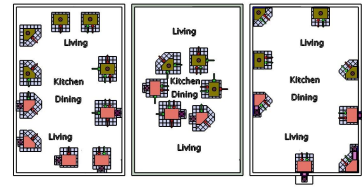
Back



Top



Masonry Heater Design House
Booth X105
www.mhdhWisconsin.com



Timber Frame by Northern Lights Timber Frame

Masonry heater layout based on Tempcast. There are many masonry heater suppliers and manufacturers in North America. Go to:

www.mhdhWisconsin.com